



45 Sheepfold Lane,  
Ruddington, NG11 6NS

**TJ**  
THOMAS  
JAMES



# 45 Sheepfold Lane, Ruddington, NG11 6NS

This well presented home provides accommodation arranged over two floors including: an entrance hallway, a spacious living room, and a dining kitchen with a range of integrated appliances and French doors opening to the rear garden on the ground floor, with the first floor landing giving access to three bedrooms, and the family bathroom.

Benefiting from gas central heating, and UPVC double glazing, the property occupies a larger than average corner plot, with enclosed gardens to the rear, a further garden to the front, and a driveway providing off road parking for up to two vehicles at the side. (Offering scope to extend the property, subject to the necessary planning consents).

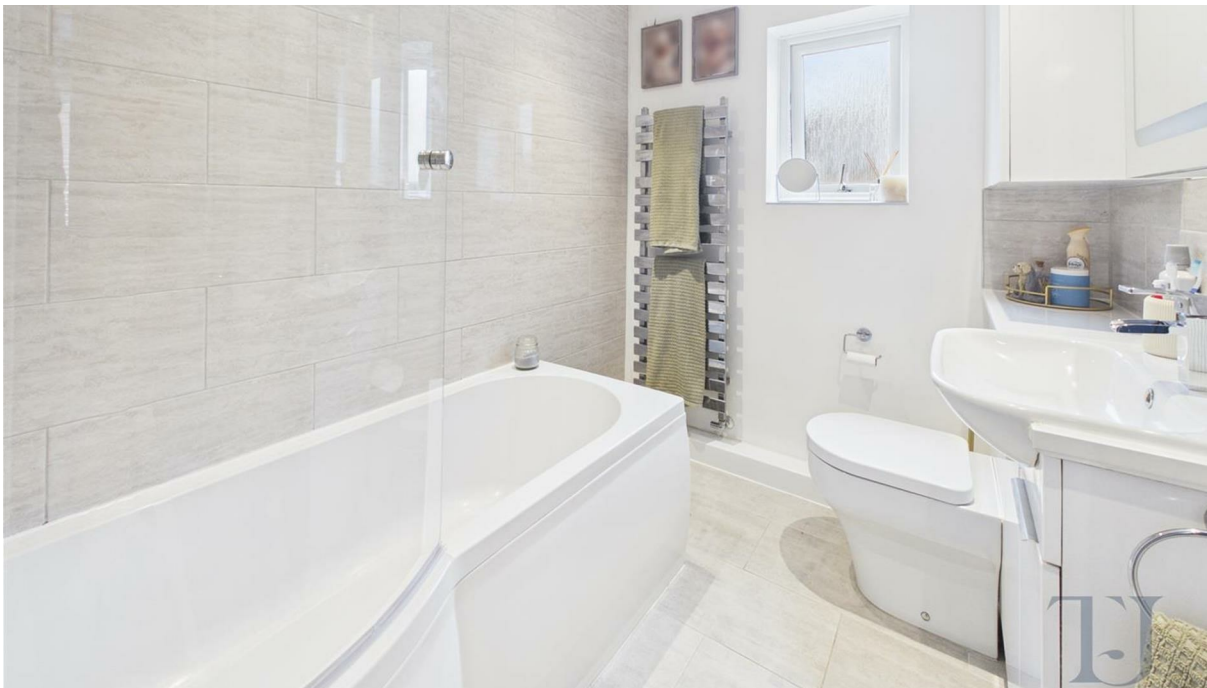
Situated in a quiet cul-de-sac position, in the highly regarded south Nottinghamshire village of Ruddington, the property is within easy reach of a wealth of local facilities including shops, churches, a doctors surgery, restaurants and a country park. Main road routes and local transport links give access to Nottingham, Leicester and neighbouring villages.

Viewing is recommended.

## Guide Price £290,000







## ACCOMMODATION

The UPVC entrance door opens into the entrance hallway. The entrance hallway has stairs rising to the first floor, Karndean flooring, a ceiling light point, a radiator, and a door into the living room.

The living room has a UPVC double glazed window to the front, gas connection for a gas fire, Karndean flooring, a ceiling light point, a radiator, and double doors opening into the dining kitchen.

The dining kitchen has a range of modern wall, drawer and base units, tiled splash backs and roll edge work surfaces, an inset one and half bowl composite sink and drainer unit with a mixer tap over, integrated appliances including: a dishwasher, a washing machine, and a fridge/freezer, plus a built in electric oven, and a four ring induction hob with a glass splash back and extractor fan over. There is a UPVC double glazed window to the rear, a cupboard housing the gas combination boiler, an under stairs storage cupboard, Karndean flooring, a radiator, and UPVC double glazed French doors opening out to the rear garden.

On reaching the first floor, the landing has a loft access hatch with retractable loft ladder, (giving access to the loft space above), and doors giving access to all three bedrooms, and the family bathroom.

Bedroom one has two UPVC double glazed windows to the front, a ceiling light point, a radiator, and a built in storage cupboard.

Bedrooms two and three both have a UPVC double glazed window to the rear, a ceiling light point, and a radiator.

Completing the accommodation, the family bathroom has a three piece suite comprising: a bath with a power shower and glazed screen over, a wash hand basin incorporated in a vanity unit (with tiled splash backs over, and storage cupboard beneath), and a low flush wc. There is an opaque UPVC double glazed window to the side, vinyl floor covering, a chrome heated towel rail, and ceiling spotlights.

## OUTSIDE

To the front of the property there is a lawned garden, with mature shrub borders, and a pathway leading to the entrance door.

The tarmac driveway at the side of the property provides off road parking for up to two vehicles. There is timber gated pedestrian access to the rear garden.

The rear garden is privately enclosed and includes; a paved patio seating area, a lawned area, raised planting borders, established trees and gated access to the driveway. The garden also houses a timber shed, and an external tap.

## Council Tax Band

Council Tax Band B. Rushcliffe Borough Council.

Amount Payable 2025/2026 £2,006.39

## Referral Arrangement Note

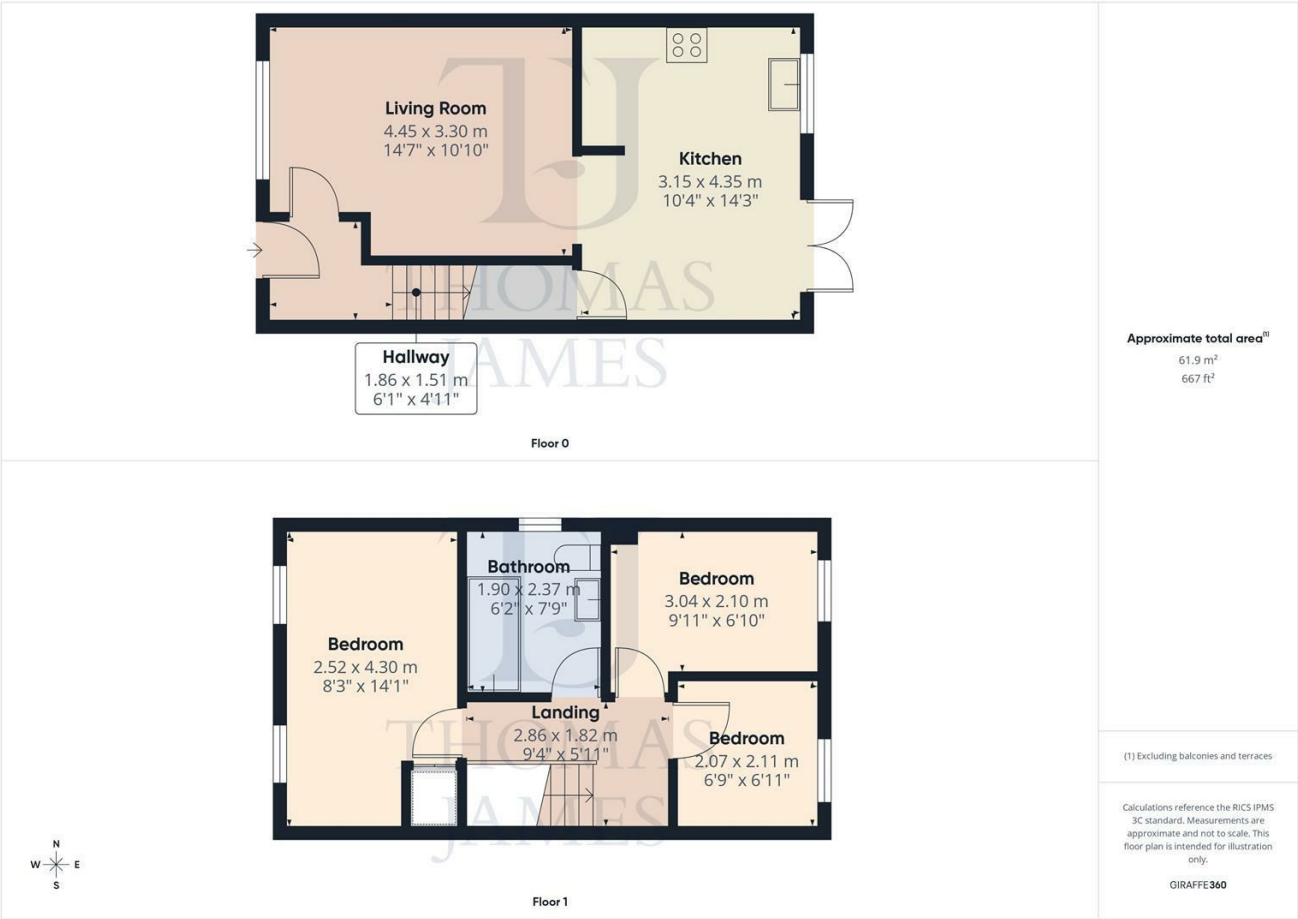
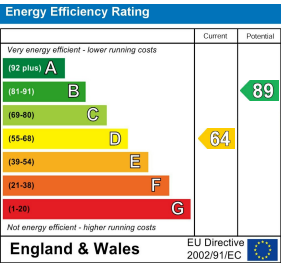
Thomas James Estate Agents always refer sellers (and will offer to refer buyers) to Premier Property Lawyers, Ives & Co, and Curtis & Parkinson for conveyancing services (as above). It is your decision as to whether or not you choose to deal with these conveyancers. Should you decide to use the conveyancers named above, you should know that Thomas James Estate Agents would receive a referral fee of between £120 and £240 including VAT from them, for recommending you to them.

# DISCLAIMER NOTES

These sales particulars have been prepared by Thomas James Estate Agents on the instruction of the vendor. Services, equipment and fittings mentioned in these particulars have NOT been tested, and as such, no warranties can be given. Prospective purchasers are advised to make their own enquiries regarding such matters. These sales particulars are produced in good faith and are not intended to form part of a contract. Whilst Thomas James Estate Agents have taken care in obtaining internal measurements, they should only be regarded as approximate.

# MONEY LAUNDERING

Under the Protecting Against Money Laundering and the Proceeds of Crime Act 2002, Thomas James require any successful purchasers proceeding with a purchase to provide two forms of identification i.e passport or photocard driving license and a recent utility bill. This evidence will be required prior to Thomas James instructing solicitors in the purchase or the sale of a property.



Thomas James Estate Agents, 20 High Street, Ruddington, Nottinghamshire, NG11 6EH

Tel: 0115 9844660 | Email: [ruddington@tjea.com](mailto:ruddington@tjea.com) | Web: [www.tjea.com](http://www.tjea.com)

These particulars, whilst believed to be accurate are set out as a general outline only for guidance and do not constitute any part of an offer or contract. Intending purchasers should not rely on them as statements of representation of fact, but must satisfy themselves by inspection or otherwise as to their accuracy. No person in this firm's employment has the authority to make or give any representation or warranty in respect of the property.

